



Erasmus+

2023-1-RO01-KA121-SCH-000126465

SERIOUS ENVIRONMENT PROBLEMS IN MY TOWN, TULCEA





POLLUTION

Pollution is the introduction of harmful materials into the environment. Pollutants can be natural, such as volcanic ash. They can also be created by human activity, such as trash or runoff produced by factories. Pollutants damage the quality of air, water, and land.

Water pollution is any physical, chemical, biological or bacteriological alteration of water, beyond an admissible limit, including exceeding the natural level of radioactivity produced directly or indirectly by human activities.



01. THE POLLUTION OF DANUBE DELTA

THE DANUBE DELTA



via : Romanian Romance

The Danube Delta is the second largest river delta in Europe, and is the best preserved on the continent. The greater part of the Danube Delta lies in Romania (Tulcea County), with a small part in Ukraine (Odesa Oblast). Its approximate surface area is 4,152 square kilometres , of which 3,446 km² is in Romania. As a young region in full process of consolidation, the Danube Delta represents a very favourable place for the development of highly diverse flora and fauna, unique in Europe, with numerous rare species.

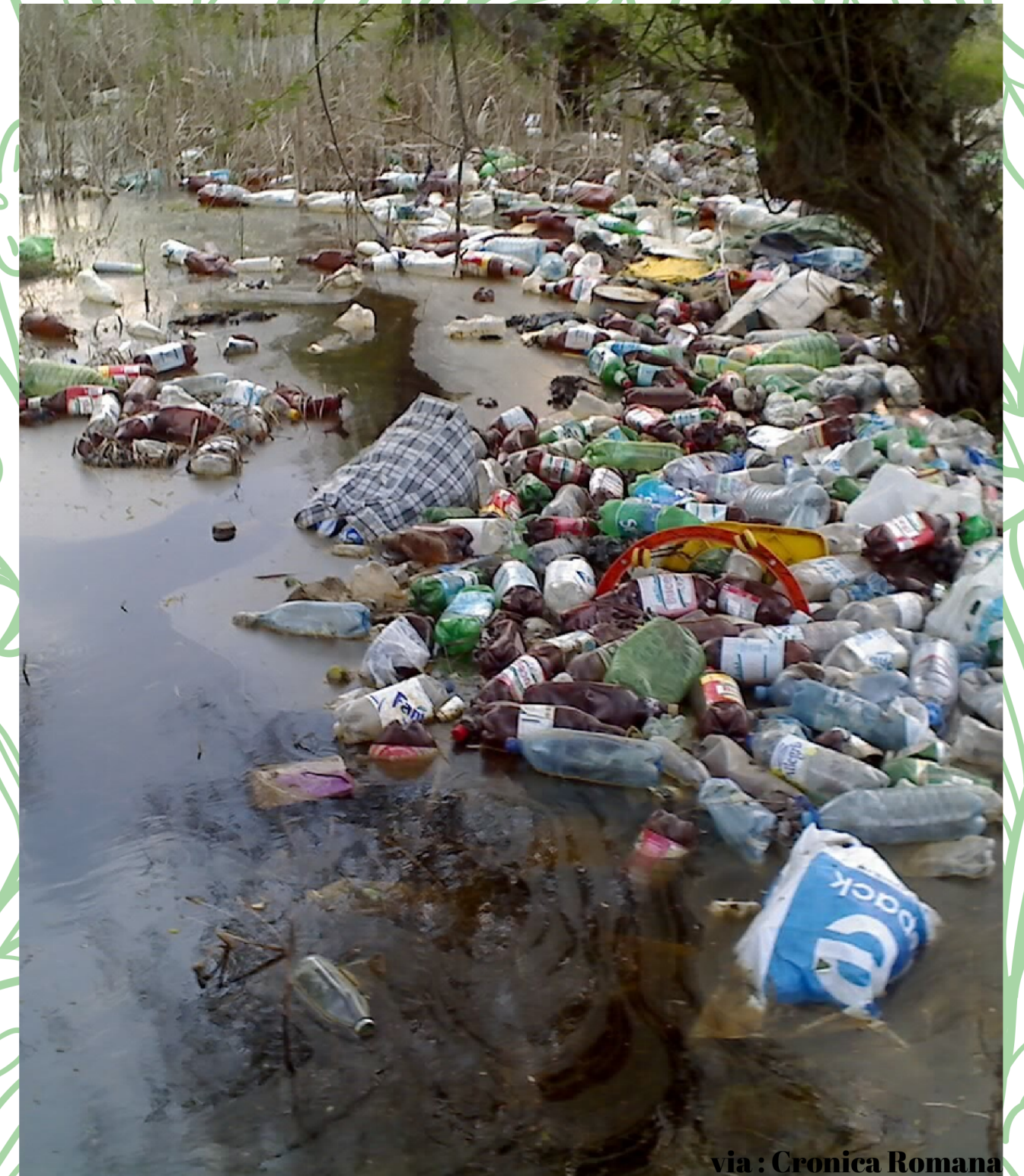
THE POLLUTION OF DANUBE DELTA

Along with the emergence of human civilization, the brutal intervention of man also appeared through the irrational exploitation of nature and the alteration of the environment through the pollution produced by industrial, agricultural and household activities.

Pesticide residues are found in the Danube waters in average annual concentrations that exceed the maximum allowed, by 30- 45%. The causes of these exceedances are the discharge of industrial waste water into the Danube water and the entrainment of pesticides from agricultural lands.

Other pollutants with toxicological impact are metals, especially iron, and lead. These come from the discharge of urban and industrial waste water into the Danube.

The storage of household waste creates serious environmental problems. The locals often throw their garbage at the edge of the villages, or even in the water.



via : Cronica Romana



02. THE POLLUTION CAUSED BY THE ALUMINIUM FACTORY

THE ALUMINIUM FACTORY

Alum Tulcea is the only alumina producing company in Romania, established in 1973. Alum is the largest producer of calcined alumina, used to obtain aluminum, in Romania and South-Eastern Europe. The company's products are sold both domestically and internationally, Alum benefiting from its strategic location on the Danube canal not far from Constanța, the largest port in Romania.



via : Digi24

HOW DOES ALUMINIUM POLLUTE?

Aluminium has excellent properties and is used in transport, construction, electronic hardware and electric transmission lines. For this reason, it's considered a significant source of pollution. For example, aluminium is a cause of water contamination, with toxic effects on aquatic life, and also on human health by entering the food chain. Another problem caused by the use of the factory is the heavy pollution of the air.



via : Capital



UJANEAVTUAGERPRES FOTO



via: Libertatea



AGERPRES

via: Radon



**THOSE ARE OUR 2
MOST SERIOUS
ENVIRONMENT
PROBLEMS IN OUR
TOWN, TULCEA. WE ARE
EXCITED TO HEAR
EVERYONE'S
SOLUTIONS TO THEM! :)**



THANKS FOR WATCHING!

ROMANIAN TEAM:

ALEXANDRA ALEXOIU

REBECA CERNAMORIT

ANDREEA ELIZA GEMANARU

ALEXIA MARIA HERTEA

ELENA ITU

RALUCA MACAVEI

COORDINATING TEACHERS:

NICOLETA CAULEA POPESCU

AURELIA BAZBANELA

